

# SL-311

# SLIDE SWITCH SL-311 SERIES



SL-311



SL-311

## SPECIFICATIONS



10(2)A 250VAC T85

RECOGNIZED COMPONENT



Conforms to UL STD. 61058-1.  
Certified To CSA STD. C22.2  
No. 61058-1.

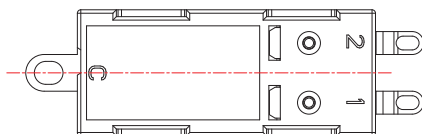
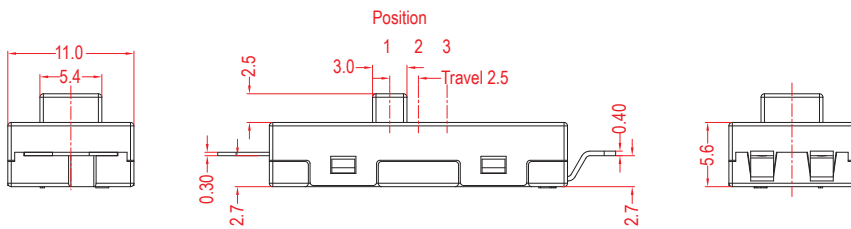
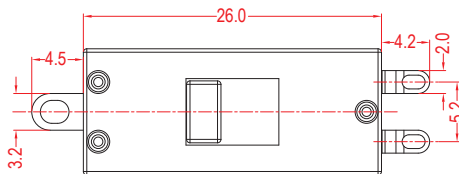
16A GP 125VAC T85 (Except KC)

## FEATURES

- Usage: Haircare product, High Speed Hair Dryer  
用途：美髮產品·高速吹風機
- High Power  
高功率使用
- Temperature Rating: 0°C~85°C  
額定溫度：0°C~85°C
- Flammability Rating: UL94V-2 / Optional UL94V-0  
可燃性等級：UL94V-2 / 可選 UL94V-0

## ORDER INFORMATION

001	L	1	S	INTERNAL USE ONLY
<b>CIRCUIT</b>	<b>CURRENT</b>	<b>KNOB TYPE</b>	<b>TERMINAL TYPE</b>	
001	L 10(2)A 250VAC	1	S	
002	16A GP 125VAC			
003				
004				
MORE				



## CIRCUIT OPTION

\*CIRCUIT.001

POSITION	ELECTRIC CIRCUIT	
	C-1	C-2
1		
2	●	
3	●	●

With production mould  
For more circuit options, please call factory.\*

## CIRCUIT DIAGRAM

